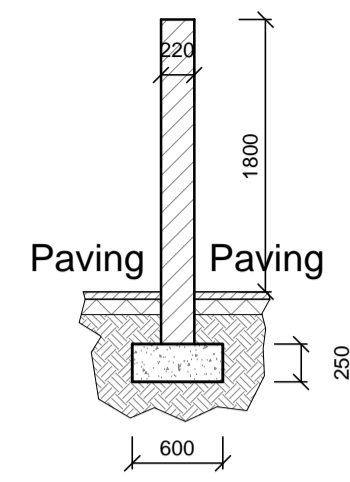
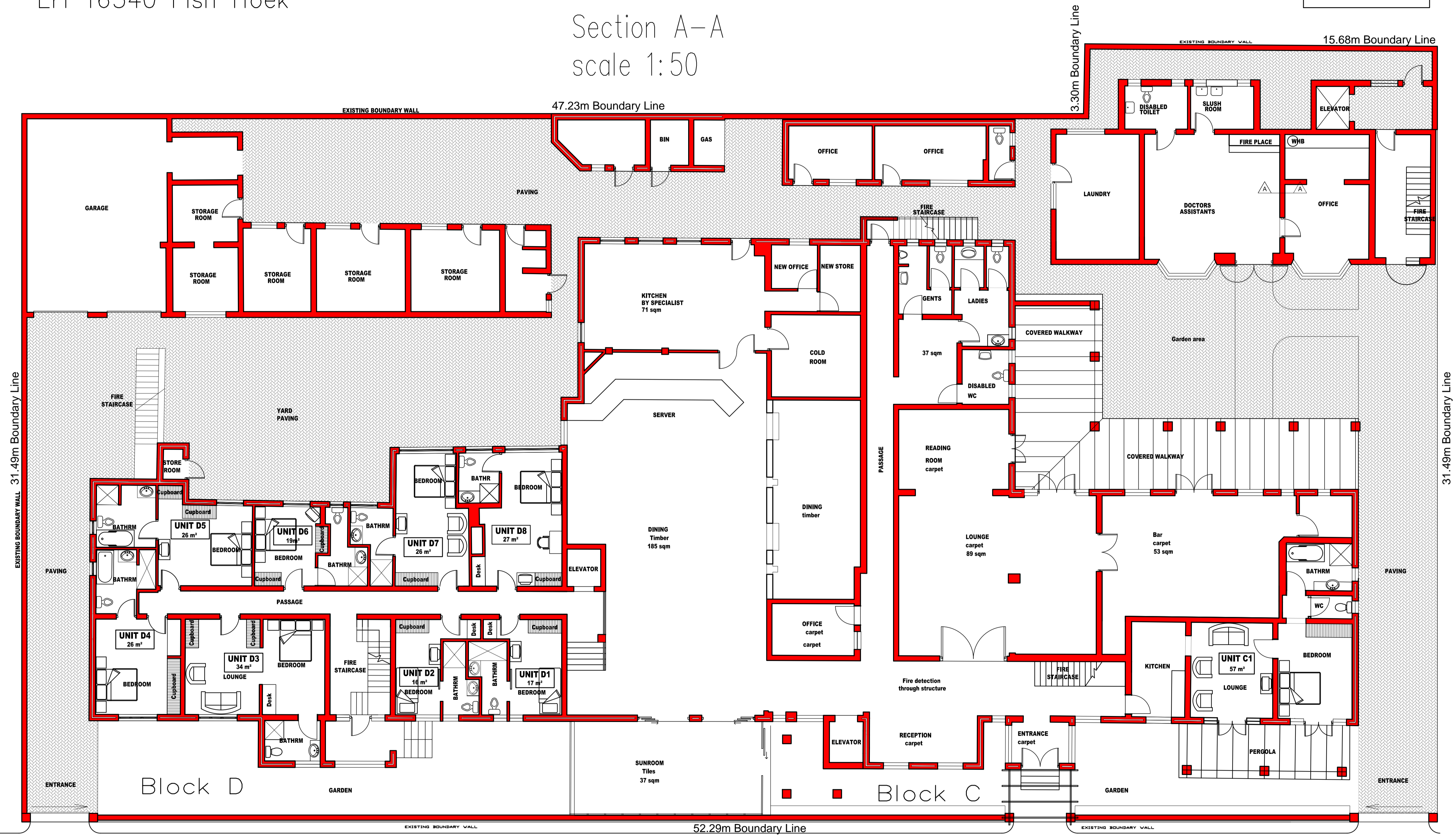


Proposed internal renovations to existing
Hotel rooms at "THE AVENUE HOTEL"
Erf 16540 Fish Hoek

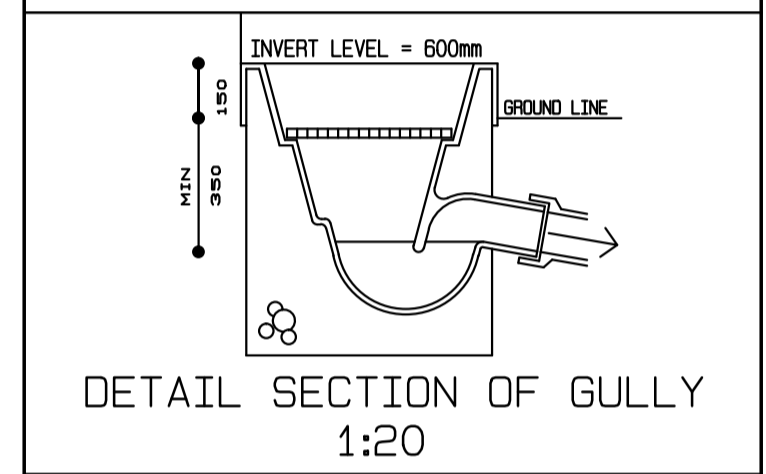
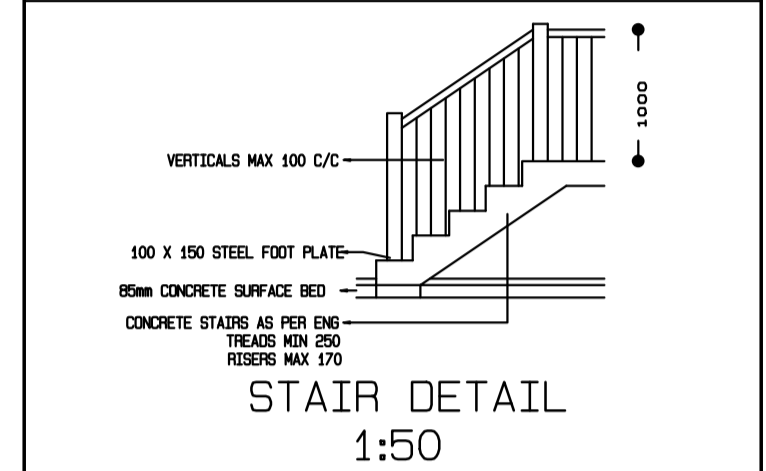
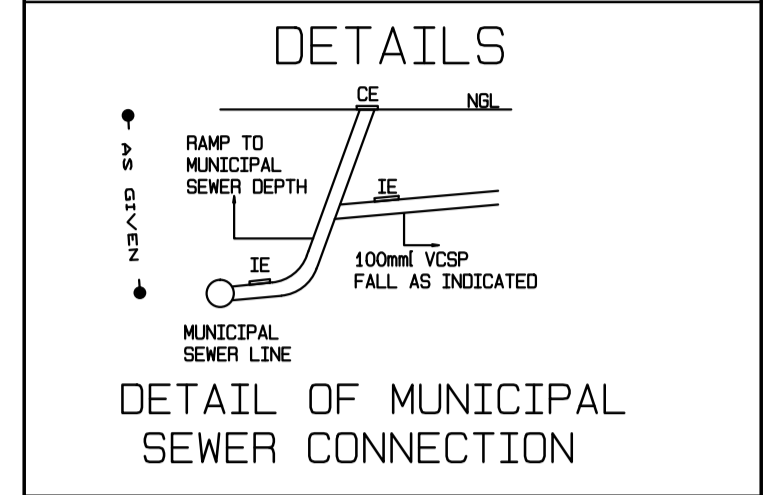


Section A-A
scale 1:50

AREA SCHEDULE	
GROUND FLOOR	1014m ²
FIRST FLOOR	831m ²
TOTAL	1845m²
ERF SIZE	2028m ²
COVERAGE	50%
FSR	0.9



THE CONTRACTOR MUST REPORT TO THE ARCHITECT ANY CONTRADICTIONARY INFORMATION BEFORE ANY WORK COMMENCES
CHECK ALL DIMENSIONS ON SITE
DO NOT SCALE - USE DIMENSIONS SHOWN
IT IS ASSUMED THAT ALL CONTRACT DOCUMENTS ARE IN THE POSSESSION OF THE CONTRACTOR
ALSO REFER TO GENERAL SPECIFICATION



- NOTES**
- DRAINAGE NOTE :**
 WFB 40mm
 BATH 40mm
 SHOWER 50mm
 SINK 40mm
 WASHING MACHINE 40mm
 WC 110mm
 SEWER PIPES 110mm & 150mm
 PVC FALL MIN. 1:80 MAX 1:40
 TO MAIN SEWER ALL CES TO
 GROUND LEVEL VENT VALVES
 ALL WORK TO SABS 0400
- GLASS
 3mm GLASS FOR WINDOW PANES UP TO 0,750sqm
 4mm GLASS FOR WINDOW PANES UP TO 1,500sqm
 5mm GLASS FOR WINDOW PANES UP TO 2,100sqm
 6mm GLASS FOR WINDOW PANES OVER 2,100sqm
 6mm SAFETY GLASS FOR WINDOW PANES LOWER THAN 500mm ABOVE FLOOR LEVEL
 6mm SAFETY GLASS FOR ALL DOORS
 GLASS ON DOORS TO BE FITTED WITH A VISUAL GLASS MARKER
 - GLAZING
 ALL GLAZING TO DOORS & WINDOWS TO COMPLY WITH PART 'N' OF THE NBR-SABS 0400-1990

SCALE

REV	DATE	DESCRIPTION
A	0000	FIRST ISSUE
-	-	-
-	-	-

WP BOSCH & ASSOCIATES	
PRETORIA OFFICE: P.O. BOX 13485 - HATFIELD - 0028 DUNBROOK PLACE - 151 NICOLSON STR. - BROOKLYN/PRETORIA CELL:082 774 4475 - TEL:(012) 346 3450 FAX:086 695 3141 E-mail:wpbarch@mweb.co.za	
WESTERN CAPE OFFICE: 98 DORP STREET, SECTION 3 STELLENBOSCH, WESTERN CAPE CELL:082 774 4475 FAX:086 695 3141 E-mail:wpbarch@mweb.co.za	

PROJECT ARCHITECT		SACAP NO.
WP BOSCH B.ARCH (UOVS) MIA		4215
DRAWING DESCRIPTION		
PROPOSED INTERNAL ALTERATIONS MINOR DEVIATIONS EXISTING HOTEL ON ERF 16540 FISH HOEK "THE AVENUE HOTEL"		
Job No:	Scb1e: AS GIVEN	CHECKED
Drawn:	F11e:	
Date:	Pat's CNA Current Projects	
DRAWING DESCRIPTION		
GROUND FLOOR PLAN		
DRAWING NUMBER	REV	
101-COUNCIL-06-08-2012	2	

Ground storey
Scale 1:100

1 Ste Avenue Street

